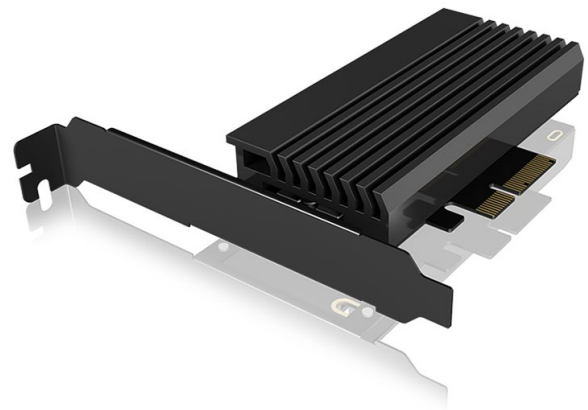


ICY BOX IB-PCI214M2-HSL

PCIe card with M.2 M-Key socket
for one M.2 NVMe SSD



Key features

- PCIe 3.0 x4, up to 32 Gbit/s
- Supports M.2 sizes of 22x30/42/60/80 mm
- Optional full and half profile slot bracket
- Including a massive heat sink with a blue LED highlight
- Compatible with Windows® 10

Packing content
 1x IB-PCI214M2-HSL, 1x heat sink, 3x heat conductive pads (70 mm),
 1x screw set, 1x full profile bracket, 1x half profile bracket,
 1x manual

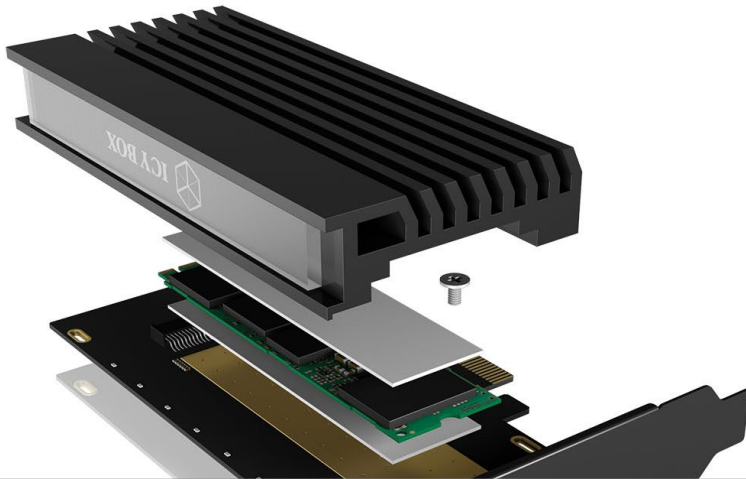
Future-proof expansion

With the PCI expansion card you can easily upgrade older systems to the new level. You can experience all the advantages of a fast M.2 SSD without having to rebuild the whole system again.

Technical data

Model	IB-PCI214M2-HSL
Article no.	60403
EAN code	4250078167242
Brand	ICY BOX
Colour	Black
Material	Plastic, metal
Interface to host computer	PCIe x4
Socket	M-Key
M.2 card size	22x30/42/60/80 mm
M.2 interface	PCIe x4 (NVMe)

Supported M.2 card keys	M.2 NVMe M-Key
SSD capacity	Unlimited
Transfer rate	Up to 32 Gbit/s
Cooling	Passive
LED	Yes
Power supply	Bus powered
Operating system	Windows®
System requirements	Windows® 10 with NVMe support, a free PCIe 3.0 x4 slot

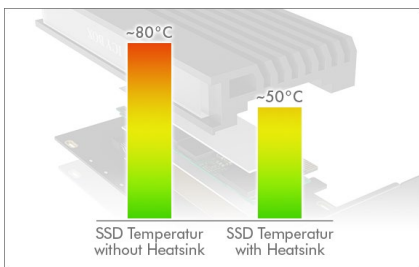


ICY BOX IB-PCI214M2-HSL PCIe card with M.2 M-Key socket for one M.2 NVMe SSD



Customizable

The IB-PCI214M2-HSL contains both a full and a half profile cover. This means that it can be used in almost any type of housing without any problems. In addition, M.2 SSDs with the dimensions of 22x30/42/60/80 mm can be installed. No matter what configuration you need, the IB-PCI214M2-HSL gives full throttle in any setting.



Speed until the board glows

The current M.2 NVMe SSDs achieve more than five times the speed of traditional SATA SSDs. This enormous power naturally generates a lot of waste heat on the small M.2 cards. In order to protect the card and the system, the speed is throttled if the SSD heats up too much. The IB-PCI214M2-HSL offers enough cooling power with the enclosed heat conduction pads and the large heat sink so that you can enjoy the full power of your M.2 SSD at all times.



Power and design

The massive heat sink is not only responsible for temperature control. The integrated acrylic glass highlight is illuminated by LEDs and immerses the system in a rich blue tone.

Logistical data

Packing unit: 40 pcs./carton
Total weight: 12.1 kg/carton
Gross weight (with packing): 0.3 kg
Net weight: 0.023 kg

Dimension/carton: 500x330x300 mm
Dimension (with packing): 28x155x205 mm
Dimension of article: 16x115x60 mm
Country of origin: China

