

1. Modell - Festplatte (HDD) - Anschluss - Farbe

Modell	HDD	Host	Farbe
IB-373U3	SATA III	USB 3.0	Schwarz

2. Verpackungsinhalt

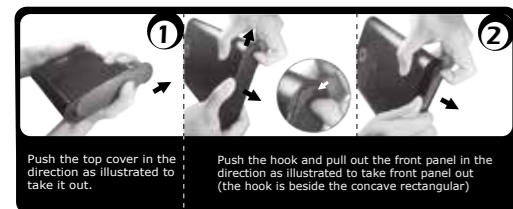
IB-373U3, externes Netzteil, USB 3.0 Kabel, Handbuch

3. Merkmale

- Festplattengehäuse für 1x 3,5" SATA Festplatte/SSD
- USB 3.0 Hostanschluss 5 Gbit/s mit UASP Support
- Unterstützt SATA III bis zu 6 Gbit/s
- Unterstützt: Windows & MAC
- Abwärts kompatibel mit USB 2.0
- Netzteil (100 -240 V), 12 V / 2 A, 24 W

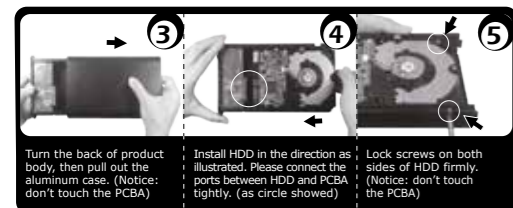
4. Festplattenmontage

Beim Ein- und Ausbau der Festplatte müssen alle Kabelverbindungen zum Computer gelöst werden.



Push the top cover in the direction as illustrated to take it out.

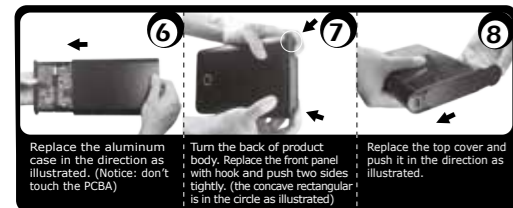
Push the hook and pull out the front panel in the direction as illustrated to take front panel out (the hook is beside the concave rectangular)



Turn the back of product body, then pull out the aluminum case. (Notice: don't touch the PCBA)

Install HDD in the direction as illustrated. Please connect the ports between HDD and PCBA tightly. (as circle showed)

Lock screws on both sides of HDD firmly. (Notice: don't touch the PCBA)



Replace the aluminum case in the direction as illustrated. (Notice: don't touch the PCBA)

Turn the back of product body. Replace the front panel with hook and push two sides tightly. (the concave rectangular is in the circle as illustrated)

Replace the top cover and push it in the direction as illustrated.

1. Model - HDD - Interface - Colour

Model	HDD	Host	Colour
IB-373U3	SATA III	USB 3.0	Black

2. Package contents

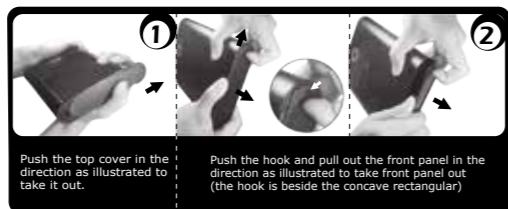
IB-373U3, Manual, USB 3.0 cable, Power Adapter

3. Key Features

- External case for 1x 3.5" SATA HDD/SSD
- USB 3.0 Host Interface 5 Gbit/s with UASP Support
- Supports SATA III up to 6 Gbit/s
- Supports: Windows & Mac OS
- Backwards compatible with USB 2.0
- AC Power Adapter (100 -240 V), 12 V / 2 A, 24 W

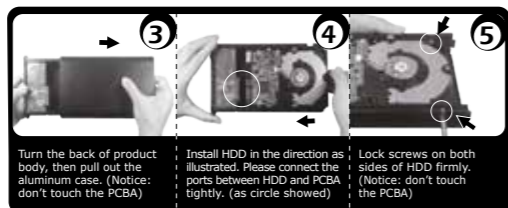
4. HDD Installation

During the HDD assembly all cabling has to be disconnected from the computer.



Push the top cover in the direction as illustrated to take it out.

Push the hook and pull out the front panel in the direction as illustrated to take front panel out (the hook is beside the concave rectangular)



Turn the back of product body, then pull out the aluminum case. (Notice: don't touch the PCBA)

Install HDD in the direction as illustrated. Please connect the ports between HDD and PCBA tightly. (as circle showed)

Lock screws on both sides of HDD firmly. (Notice: don't touch the PCBA)



Replace the aluminum case in the direction as illustrated. (Notice: don't touch the PCBA)

Turn the back of product body. Replace the front panel with hook and push two sides tightly. (the concave rectangular is in the circle as illustrated)

Replace the top cover and push it in the direction as illustrated.

5. Application

5.1 The external HDD can be connected to or disconnected from the computer via USB cable without shutting down the computer.

5.2 Please await the end of read/write operations before disconnecting the HDD to avoid data lost.

5.3 A new HDD must first be initialised, partitioned and formatted by the operation system to be displayed by the system.

5.4 If the hard disc isn't recognised instantly by the operating system please check:

- if the driver software is installed (USB),
- if the HDD is initialised, partitioned and formatted.

1. Modèle - Disque duré - Interface - Couleur

Modèle	HDD	Host	Couleur
IB-373U3	SATA III	USB 3.0	Noir

2. Contenu de la livraison

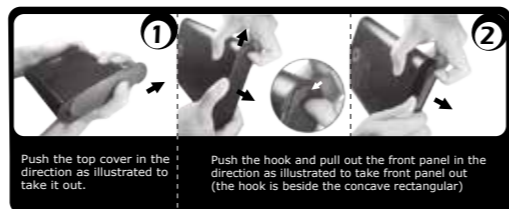
IB-373U3, manuel, Câble USB 3.0, Adaptateur

3. Spécialités principales

- Boîtier externe pour HDD/SSD 3.5" SATA
- USB 3.0 Host 5 Gbit/s y UASP
- Supporte SATA III 6 Gbit/s
- Supporte: Windows & Mac OS
- Rétrocompatible avec USB 2.0
- Adaptateur (100 -240 V), 12 V / 2 A, 24 W

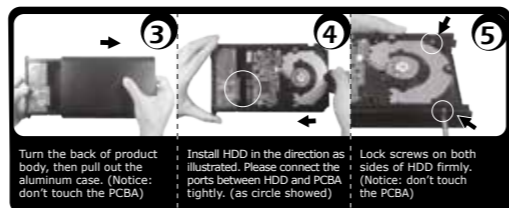
4. Installation HDD

Devant l'installation ou la désinstallation d'un disque dur il faut débrancher tous câbles de connexion à l'ordinateur.



Push the top cover in the direction as illustrated to take it out.

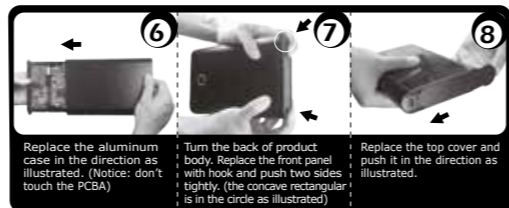
Push the hook and pull out the front panel in the direction as illustrated to take front panel out (the hook is beside the concave rectangular)



Turn the back of product body, then pull out the aluminum case. (Notice: don't touch the PCBA)

Install HDD in the direction as illustrated. Please connect the ports between HDD and PCBA tightly. (as circle showed)

Lock screws on both sides of HDD firmly. (Notice: don't touch the PCBA)



Replace the aluminum case in the direction as illustrated. (Notice: don't touch the PCBA)

Turn the back of product body. Replace the front panel with hook and push two sides tightly. (the concave rectangular is in the circle as illustrated)

Replace the top cover and push it in the direction as illustrated.

5. Application

5.1 Le boîtier externe peut être connecté directement à l'ordinateur en utilisant le câble USB. Le disque dur peut être branché ou débranché de l'ordinateur pendant l'exploitation normale de l'ordinateur.

5.2 Attendez le complètement des écritures et des lectures avant de déconnecter un boîtier branché à l'ordinateur pour éviter une perte de données.

5.3 Avant tout, un disque dur nouvel doit être initialisé, partitionné, et formaté par le système d'exploitation pour être indiqué par le système.

5.3 Si le disque dur n'est pas reconnu immédiatement par le système, vérifiez le suivant:

- si le logiciel de pilotes est installé (USB),
- si le disque dur est initialisé, partitionné, et formaté.

1. módulo - disco duro - interfaz - Color

Módulo	HDD	Host	Color
IB-373U3	SATA III	USB 3.0	Negro

2. Contenido del embalaje

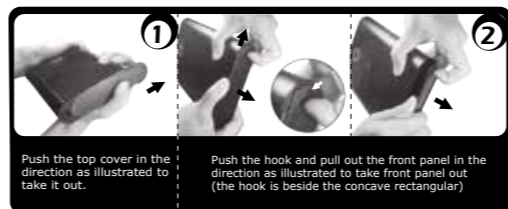
IB-373U3, manual, Cable USB 3.0, Fuente de alimentación

3. Característica

- Caja para discos duros/SSD 3.5" SATA
- USB 3.0 Host 5 Gbit/s y UASP
- Soporta SATA III 6 Gbit/s
- Soporta: Windows & Mac
- Compatible con USB 2.0
- Fuente de alimentación (100 -240 V), 12 V / 2 A, 24 W

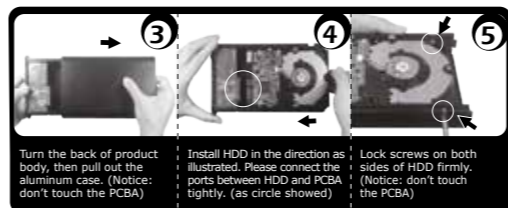
4. Ensamblaje de disco duro

Antes de instalar o desinstalar un disco duro se debe desconectar los cables de conexión / alimentación al ordenador.



Push the top cover in the direction as illustrated to take it out.

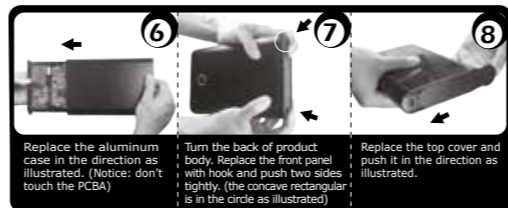
Push the hook and pull out the front panel in the direction as illustrated to take front panel out (the hook is beside the concave rectangular)



Turn the back of product body, then pull out the aluminum case. (Notice: don't touch the PCBA)

Install HDD in the direction as illustrated. Please connect the ports between HDD and PCBA tightly. (as circle showed)

Lock screws on both sides of HDD firmly. (Notice: don't touch the PCBA)



Replace the aluminum case in the direction as illustrated. (Notice: don't touch the PCBA)

Turn the back of product body. Replace the front panel with hook and push two sides tightly. (the concave rectangular is in the circle as illustrated)

Replace the top cover and push it in the direction as illustrated.

5. Aplicación

5.1 Se puede conectar la carcasa directamente por el cable USB. Se puede conectar el disco duro del ordenador durante la operación normal

5.2 Espere el fin de escrituras y lecturas antes de desconectar una caja conectada del ordenador para evitar pérdidas de datos.

5.3 En primer lugar, un nuevo disco duro debe estar inicializado, compartimentado y formateado por el sistema operativo para estar indicado por el sistema.

5.4 Repita la conexión y compruebe en caso de que el disco duro no sea reconocido de inmediato por el sistema e examine lo siguiente:

- si el programa de control está instalado (USB),
- si el disco duro está inicializado, compartimentado y formateado.

1. Modello - HDD - Extern collegamento - Colour

Modello	HDD	Host	Colour
IB-373U3	SATA III	USB 3.0	Nero

2. Contenuto della confezione

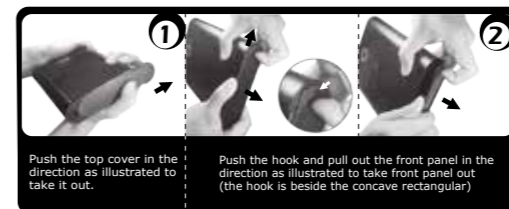
IB-373U3, manuale, Cavo USB 3.0, adattatore di alimentazione

3. Caratteristiche

- Cassetto per hard disk/SSD SATA 3.5"
- USB 3.0 Host 5 Gbit/s e UASP
- Supporta SATA III 6 Gbit/s
- Supporta: Windows & Mac
- Retrocompatibile con USB 2.0
- Adattatore di alimentazione (100 -240 V), 12 V / 2 A, 24 W

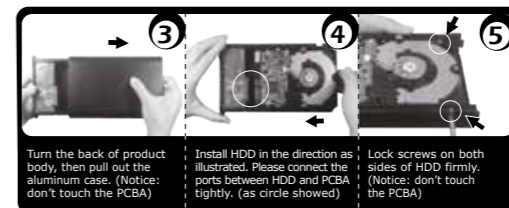
4. HDD installazione

Staccare tutti i cavi di connessione con il computer durante il montaggio e lo smontaggio del disco fisso.



Push the top cover in the direction as illustrated to take it out.

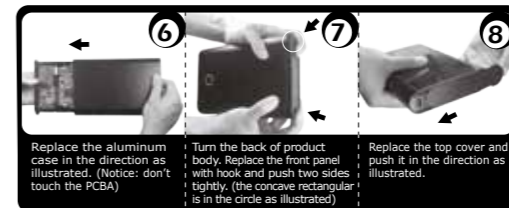
Push the hook and pull out the front panel in the direction as illustrated to take front panel out (the hook is beside the concave rectangular)



Turn the back of product body, then pull out the aluminum case. (Notice: don't touch the PCBA)

Install HDD in the direction as illustrated. Please connect the ports between HDD and PCBA tightly. (as circle showed)

Lock screws on both sides of HDD firmly. (Notice: don't touch the PCBA)



Replace the aluminum case in the direction as illustrated. (Notice: don't touch the PCBA)

Turn the back of product body. Replace the front panel with hook and push two sides tightly. (the concave rectangular is in the circle as illustrated)

Replace the top cover and push it in the direction as illustrated.

5. Applicazione

5.1 Il contenitore esterno può essere collegato direttamente al computer tramite il cavo USB. Il disco fisso può essere collegato o staccato dal computer durante il funzionamento di quest'ultimo.

5.2 Attendere la fine di funzioni di lettura e di scrittura prima di staccare un contenitore esterno collegato al computer, per evitare perdite di dati.

5.3 Ogni nuovo disco fisso deve venir inizializzato, partizionato e formattato dal drive, prima di poter essere indicato dal sistema.

5.4 Se il disco fisso non viene riconosciuto subito dal sistema, verificare:

- se il software di drive relativo è installato (USB),
- se il disco fisso è stato inizializzato, partizionato e formattato.

Manual IB-373U3

External enclosure for 3,5" HDDs

Handbuch IB-373U3

Externes Gehäuse für 3,5" Festplatten

Manuel Série IB-373U3

Boîtier externe aux disques durs 3,5"

Manuale della IB-373U3

Contentore esterno per disco fisso per dischi da 3,5"

Manual Serie IB-373U3

Carcasa externa para discos duros 3,5"

Εγχειρίδιο Χρήσης IB-373U3

Εξωτερική θήκη για οδηγούς σκληρού δίσκου 3,5"

Instrukcja obsługi IB-373U3

Obudów zewnętrznych na dyski 3,5"

Руководство IB-373U3

Внешний контейнер (кейс) для 3,5" харддиска

Instruções Série IB-373U3

Caixa externa para discos 3,5"

Manuál IB-373U3

Externí box pro 3,5" pevné disky



1. Model - twardy dysk – interface - Kolor

Model	HDD	Interface	Kolor
IB-373U3	SATA III	USB 3.0	czarny

2. Zawarcie pudełka

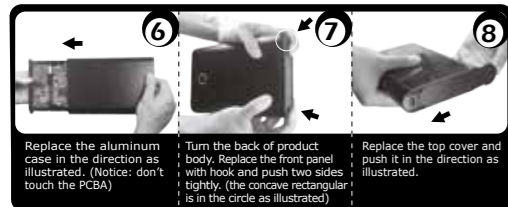
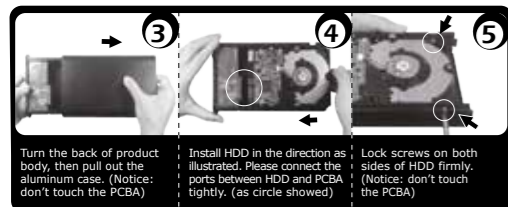
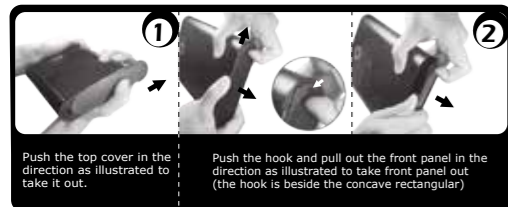
IB-373U3, podręcznik obsługi, Kabel USB 3.0, Zasilacz

3. Szegoly

- Obudów zewnętrznych na dyski SATA 3.5" HDD/SSD
- USB 3.0 Host 5 Gbit/s i UASP
- Zgodność z SATA III 6 Gbit/s
- Zgodność z : Windows & Mac
- Kompatybilny z USB 2.0
- Zasilacz (100-240 V) , 12 V / 2 A, 24 W

4. Instalacja twardego dysku

Przy włączeniu i wyłączeniu twardego dysku muszą być wszystkie kable odłączone.

**5. Aplikacje****5.1** Dysk zewnętrzny może zostać podłączony do komputera poprzez kabel USB.

Nawet jeśli odłączysz go lub podłączysz w czasie działania komputera, nic się nie stanie (Hot Plug).

5.2 Proszę poczekać aż będzie skończony czytanie lub pisanie na dysk za nim zostanie odłączony od komputera, żeby zapobiedz utraceniu danych**5.3** Nowy dysk twardy musi najpierw być przez system z formatowany i inicjalizowany zostac.**5.4** Jeżeli napęd nie zostanie rozpoznany przez komputer, proszę sprawdzić:

- czy są zainstalowane sterowniki dla USB,
- upewnij się, że dysk jest inicjalizowany, z formatowany i partycjowany.

1. Μοντέλο - Οδηγός σκληρού δίσκου (HDD) – Διεπαφή

Μοντέλο	HDD	Διεπαφή	Χρώμα
IB-373U3	SATA III	USB 3.0	μαύρος

2. Περιεχόμενο συσκευασίας

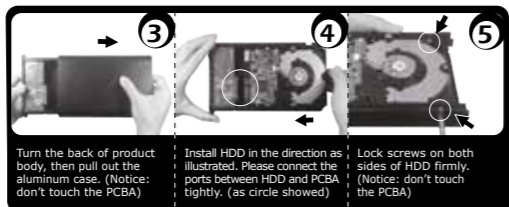
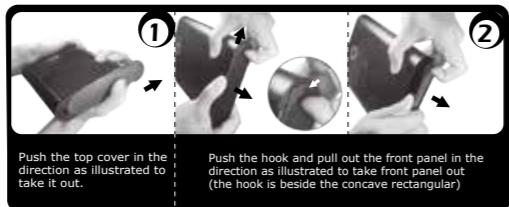
IB-373U3, Εγχειρίδιο, Καλώδιο USB 3.0, Τροφοδοτικό

3. Κύρια χαρακτηριστικά

- Εξωτερική Θήκη για Οδηγούς Σκληρού Δίσκου SATA 3.5" HDD/SSD
- USB 3.0 Host 5 Gbit/s και UASP
- Υποστηρίζει SATA III 6 Gbit/s HDD
- Υποστηρίζει: Windows & Mac
- Συμβατό με USB 2.0
- Τροφοδοτικό (100 –240 V), 12 V/2 A, 24 W

4. Εγκατάσταση σκληρού δίσκου

Πριν από την τοποθέτηση ή την εξαγωγή του σκληρού δίσκου πρέπει να αποσυνδεθούν όλα τα καλώδια από τον υπολογιστή.

**5. Εφαρμογή****5.1** Ο εξωτερικός σκληρός δίσκος μπορεί να συνδεθεί στον υπολογιστή ή να αποσυνδεθεί από αυτόν με ένα καλώδιο USB,**5.2** Παρακαλούμε περιμένετε την ολοκλήρωση των διαδικασιών ανάνηψης/εγγραφής, πριν αποσυνδέσετε το σκληρό δίσκο, για να αποφύγετε απώλεια δεδομένων.**5.3** Ένας νέος σκληρός δίσκος πρέπει πρώτα να αρχικοποιηθεί, να διαμεριστεί και να μορφοποιηθεί από το λειτουργικό σύστημα για να προβληθεί από το σύστημα.**5.4** Εάν ο σκληρός δίσκος δεν αναγνωριστεί αμέσως από το λειτουργικό σύστημα, παρακαλούμε ελέγξτε τα εξής:

- εάν έχει εγκατασταθεί το λογισμικό οδήγησης (USB),
- εάν ο σκληρός δίσκος έχει αρχικοποιηθεί, διαμεριστεί και μορφοποιηθεί.

1. Модель - харддиск (HDD) - хост интерфейс - Цвет

Модель	HDD	Хост-интерфейс	Цвет
IB-373U3	SATA III	USB 3.0	черный

2. Содержание упаковки

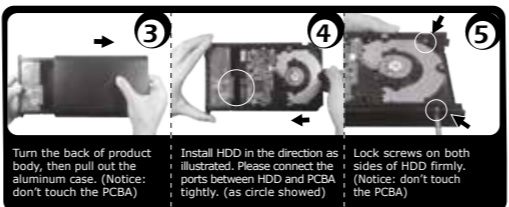
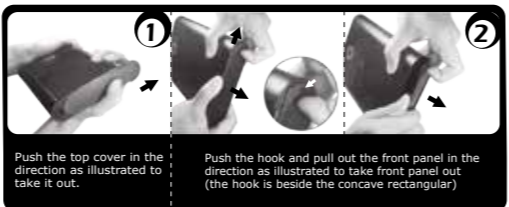
IB-373U3, Руководство, Кабель USB 3.0, адаптер питания

3. Основные признаки

- Внешний контейнер для 3.5" SATA HDD/SSD
- USB 3.0 внешний интерфейс 5 Гбит/с / с и UASP
- Поддерживает SATA III 6 Гбит/с
- поддерживает: Windows & Mac
- Совместимый с USB 2.0
- адаптер питания (100 –240 В), 12 В / 2 А, 24 W

4. Монтаж харддиска

Перед монтажем и демонтажем харддиска необходимо отсоединить все кабели от сети, а также от компьютера.

**5. Применение****5.1** "Харддиск может быть, по необходимости, подключен к работающему компьютеру (ПК) или отключен от него (поддерживается "горячая" замена дисков)."**5.2** Дождитесь окончания процессов сканирования или записи данных и только потом отсоедините устройство от ПК, чтобы предотвратить потерю данных!**5.3** Новый харддиск необходимо сначала инициализировать, форматировать и потом разбить по необходимости на части (партиции), чтобы он был без проблем найден операционной системой.**5.4** Если харддиск не будет сразу узнан операционной системой, то проверьте:

- установлен ли нужный драйвер (USB),
- был ли харддиск инициализирован, форматирован и партиционирован (разбит на части)

1. Modelo – Disco rígido (HDD) – Ligação – Cor

Modelo	HDD	Host	Cor
IB-373U3	SATA III	USB 3.0	negro

2. Conteúdo da embalagem

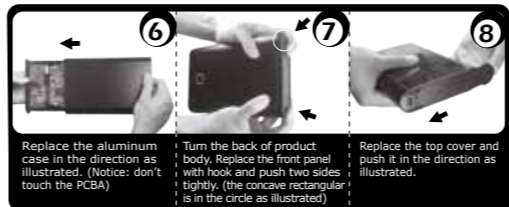
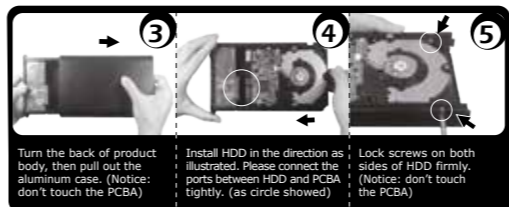
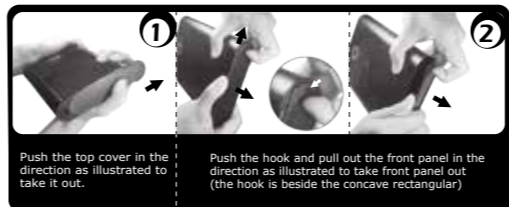
IB-373U3, manual, Cabo USB 3.0, Alimentação AC

3. Características

- Caixa para 3.5" SATA HDD/SSD
- Taxa de transferência: USB 3.0 com até 5 Gbit/s e UASP
- Compatível SATA III 6 Gbit/s
- Compatível com: Windows & Mac
- Compatível com USB 2.0
- Alimentação AC (100-240V), 12V / 2 A, 24 W

4. Montagem do disco rígido

Ao instalar e remover o disco rígido, assegure-se de que todas as ligações dos cabos ao computador são desapertadas.

**5. Utilização****5.1** O disco rígido externo pode ser ligado (ao) ou desligado do computador, com este em funcionamento, através do cabo USB.**5.2** Por favor, aguarde que terminem os processos de leitura e de escrita antes de desligar a caixa do computador para evitar perder os dados.**5.3** Um novo disco rígido só deve ser inicializado, compartimentado e formatado a partir do sistema operativo para ser indicado pelo sistema.**5.4** Se o disco rígido não for imediatamente reconhecido pelo sistema, verifique o seguinte:

- se o software da driver está instalado (USB),
- se o disco rígido foi inicializado, compartimentado e formatado.

1. Model – Pevný disk (HDD) – Připojení - Barva

Model	HDD	Propojení	Barva
IB-373U3	SATA III	USB 3.0	černý

2. Obsah balení

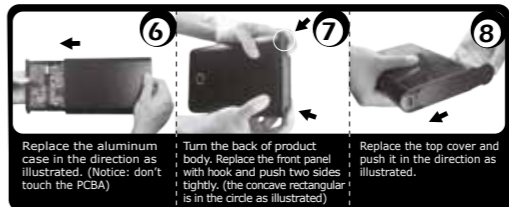
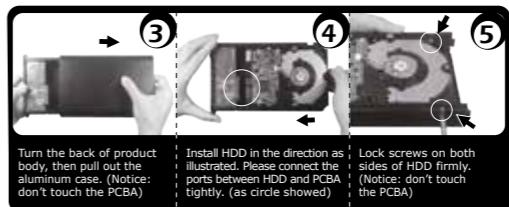
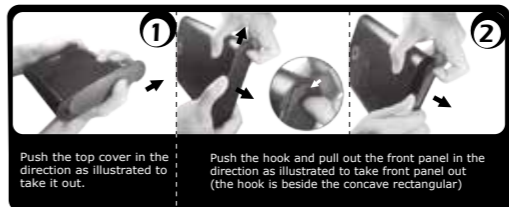
IB-373U3, manuál, USB 3.0 kabel, Napájení AC

3. Vlastnosti

- Externí box pro 3.5" SATA HDD/SSD
- USB 3.0 port 5 Gbit/s a UASP
- Podporuje SATA III 6 Gbit/s
- Podporuje: Windows & Mac
- Kompatibilní s USB 2.0
- Napájení AC (100-240 V), 12V / 2 A, 24 W

4. Montáž pevného disku

Při montáži a demontáži pevného disku musejí být všechna kabelová spojení k počítači odpojena.

**5. Použití****5.1** Externí pevný disk se může připojit k počítači během provozu pomocí USB kabelu nebo se takto odpojit.**5.2** Před odpojením disku do počítače vyčkejte ukončení zápisu a načítání dat, abyste tak zabránili jejich případné ztrátě.**5.3** Operační systém musí nový pevný disk nejprve inicializovat, nastavit jeho segmenty a naformátovat ho a poté může být systémem zobrazen.**5.4** V případě, že není pevný disk okamžitě systémem identifikován, proveďte:

- je-li inicializován software řídicího programu (USB),
- je-li provedeno inicializování, nastavení segmentů a naformátování pevného disku.